

Hangtown Creek Bridge Replacement



Project Limits

Hangtown Creek Bridge Replacement



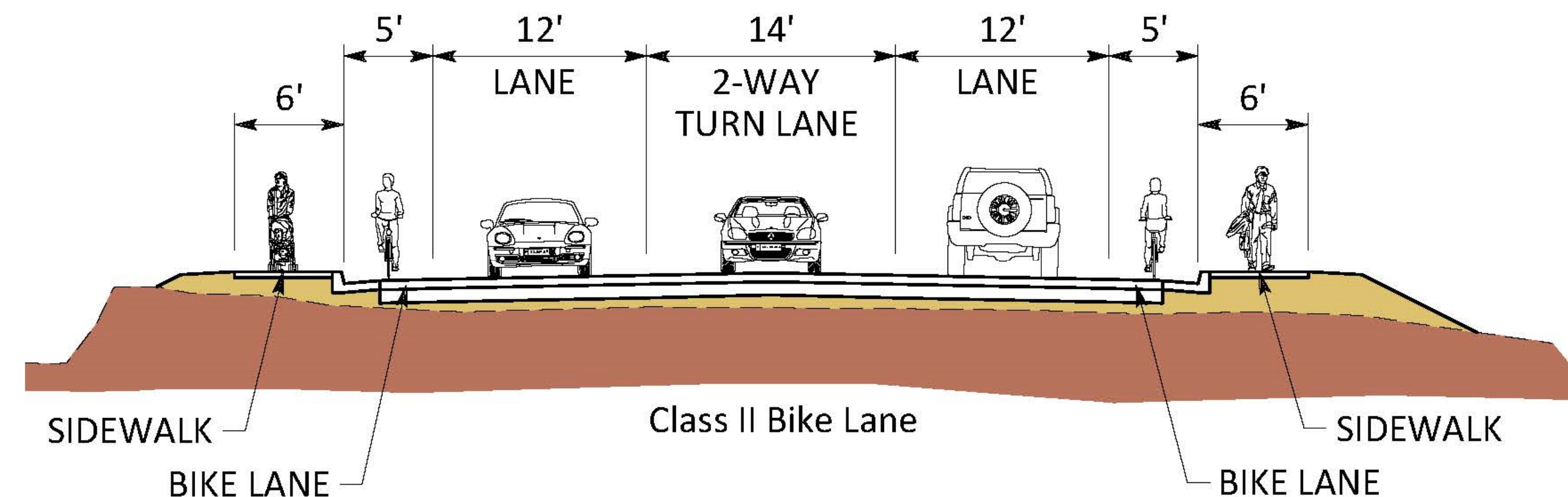
Existing Bridge

- Bridge width too narrow
- No room for bikes or peds to safely cross
- Non-crash tested barriers
- No guardrail to protect ends of barrier
- Creek overtops bridge during large storm events



New Bridge

- Two traffic lanes with center 2-way turn lane
- Class II bike lanes and sidewalks on both sides
- Higher profile to avoid overtopping during large storm events
- Crash-tested barriers and guardrail



Proposed Road and Bridge Section

Hangtown Creek Bridge Replacement



Barrier and Pedestrian Railings

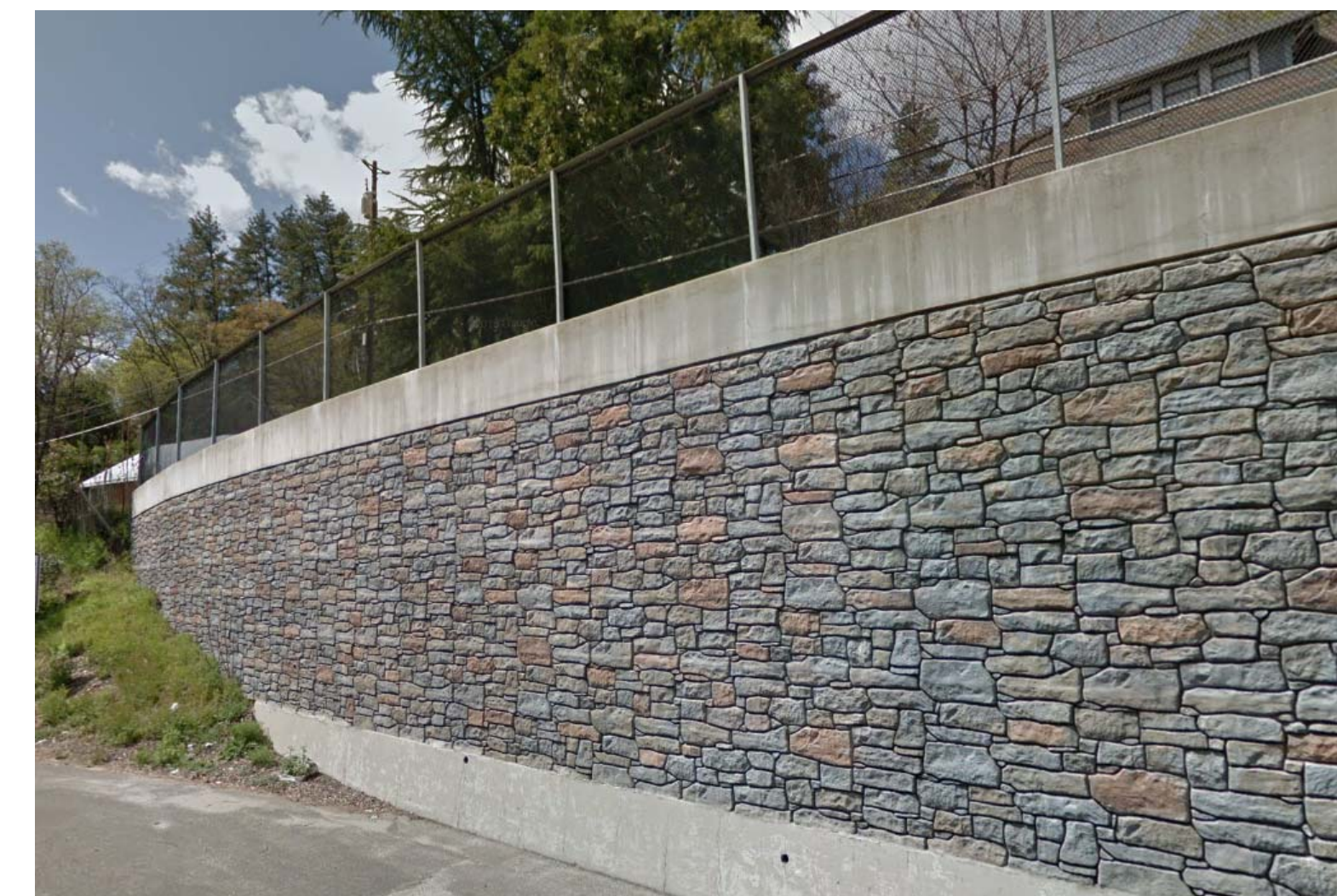


- Open Railing vs Solid Concrete
- Must be crash-tested
- Aesthetic Options



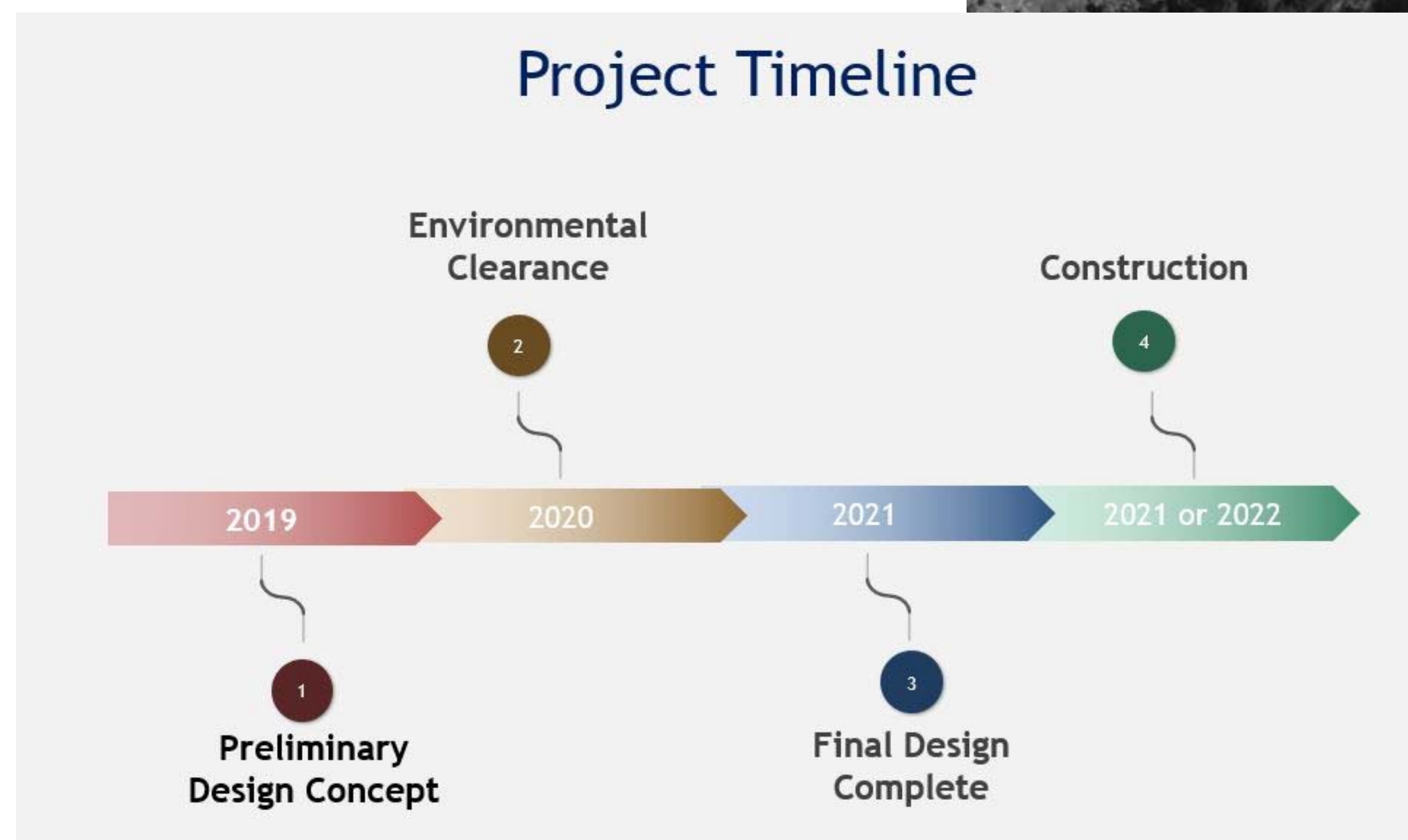
Retaining Walls

- Aesthetic Options

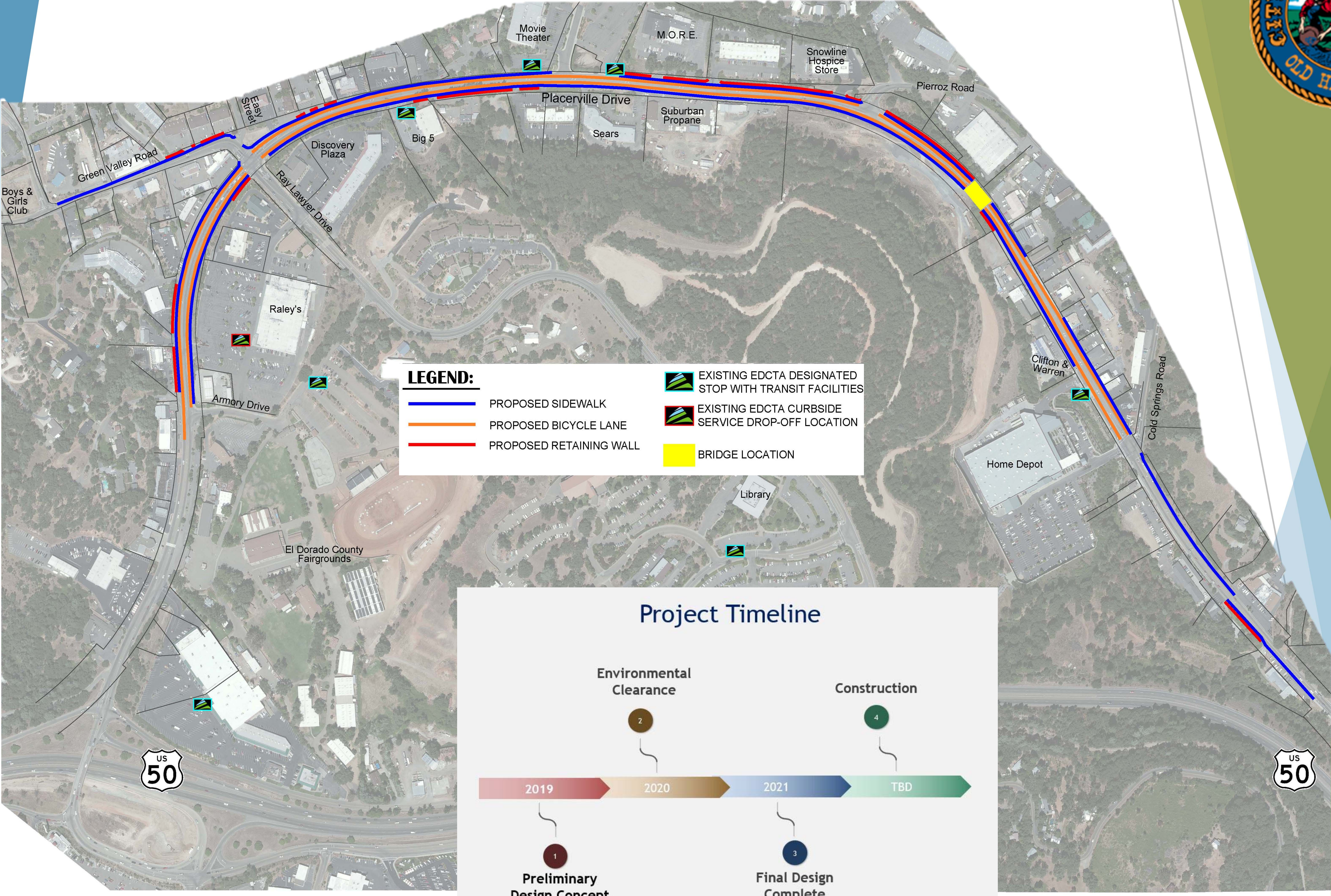


Hangtown Creek Bridge Replacement

- Bridge will be closed during construction
- Traffic will be detoured around using Pierroz Road and Cold Springs Road
- Access to businesses will be maintained during construction



Placerville Drive Bike & Pedestrian Facilities



Placerville Drive Bike & Pedestrian Facilities



Class II Bike Lane

Bike Facility Options



Class IV Protected Cycle Track



Options for delineating bike facilities



Gaps in sidewalks will be connected